



ACO Slot Drain Channel

Innovation. Safety. Design.

Stainless steel linear drainage system



A photograph of a modern outdoor terrace. In the foreground, a light-colored stone tile floor is visible. A black, linear drainage channel is embedded in the floor, running diagonally from the bottom right towards the background. A square, light-colored cover plate is positioned at the end of this channel. To the left, a white metal lounge chair with orange cushions is partially visible. In the background, more similar lounge chairs are arranged on the terrace. A white pillar is visible on the right side. The overall scene is bright and clean, showcasing the ACO Slot Drain system.

A system designed to prevent the buildup of water and infiltration.

Terraces and balconies, but also swimming pools, wellness centers and changing rooms are areas with a constant or seasonal presence of water on paved surfaces.

The ACO Slot Drain system was created with the aim of preventing stagnation or infiltration and promote effective water drainage.



ACO Slot Drain System

INNOVATION.SAFETY. DESIGN

Choosing the ACO Slot drainage system means being able to count on a one-of-a-kind product, designed to offer designers, architects, companies and installers:

Innovation:

- Low thickness system
- Easy to assemble
- Customized Engineering
- Channel and waterproofing edge are a single body without welding



Safety:

- 8-10 mm gap that can be walked on with bare feet
- the channels, correctly assembled, are watertight



Design:

- Thin slots integrate almost invisibly with the floors
- The corner elements allow visual continuity of the drainage line
- Elegance and Minimalism
- Made entirely of AISI 304 or 316 L stainless steel



ACO Slot Drain Channel

The ACO Slot Drain System is ideal for disposing of water from terraces and balconies with limited installation height and in all those places where it is necessary to drain water from the floors through drainage systems with minimal visual impact: showers, changing rooms, hotel wellness areas, and SPA, as well as pedestrian areas.

Terraces, balconies, swimming pools, changing rooms, wellness centers, and spas are places with a frequent presence of meteoric water, which, if not drained, can stagnate and dangerously infiltrate into screeds and walls. The resulting damage can vary and affect both the structures of the buildings and the safety of people.

To prevent this, it is essential to install a specific drainage system in the aforementioned application areas capable of collecting water incident on paved surfaces and channeling it quickly.

For this purpose, ACO has developed the Slot 8-10 mm slot channel system, which is highly functional and capable of simultaneously fulfilling the aesthetic function, integrating harmoniously into the architectural context and with the flooring.

ACO Slot Drains are constructed entirely of steel, using stainless steel of AISI 304 quality, or, upon request, AISI 316 L. This material ensures maximum resistance and ease of maintenance. All elements undergo a protective pickle passivation process, which guarantees resistance to even more severe corrosion.

With a slot width of just 8-10 mm, it doesn't interfere with the movement of pedestrians and meets the requirements to be walked on barefoot. The continuous slot also allows access for cleaning the entire length of the channel.



Balconies and terraces

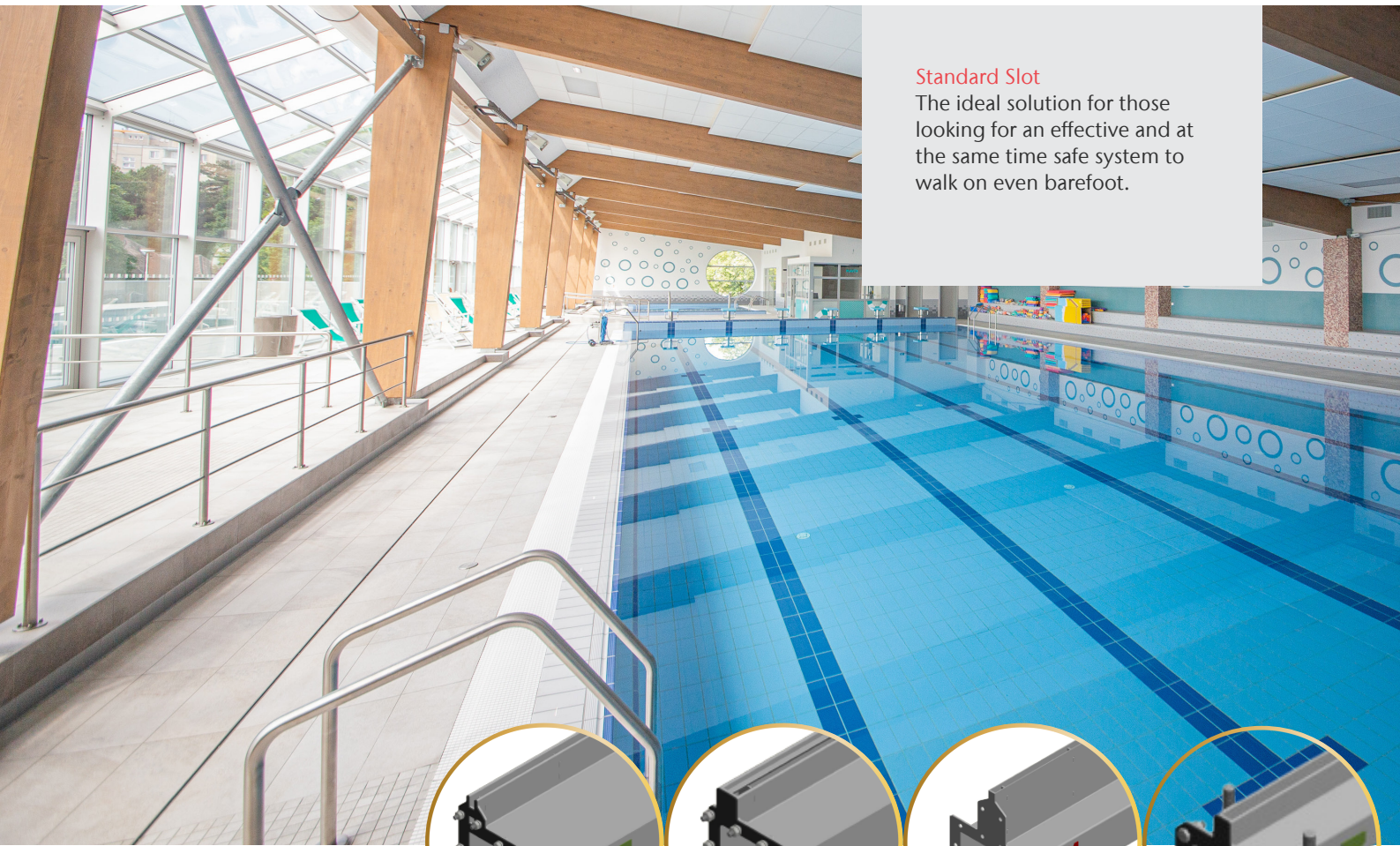
Against water stagnation and risks of infiltration into the screed



Wellness centres, thermal centres, SPAs

To guarantee a clean and safe environment at all times





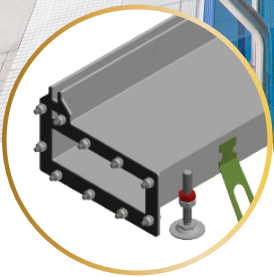
Standard Slot

The ideal solution for those looking for an effective and at the same time safe system to walk on even barefoot.

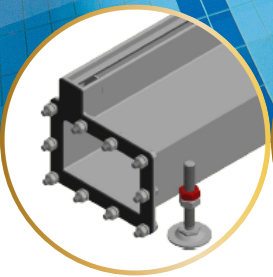


**Slotted Drain :
drainage invisible to the eyes**

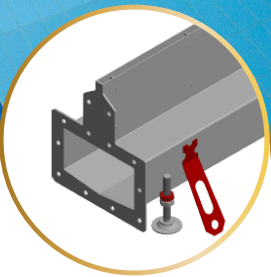
The ACO Slot Drain single-slot system possesses some of its most significant characteristics, such as being discreet, elegant, and nearly invisible in the context in which it is installed. It is available with or without an internal slope, making it adaptable to different types of floor constructions. The installation is made simple by the presence of Easy Fix adjustable leveling feet.



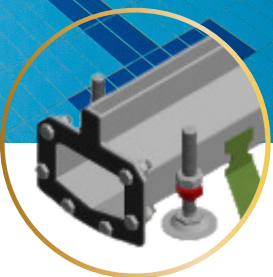
a



b



c



d

Slotted Types :

- | | |
|--------------------|--------------------------|
| a Side Single Slot | c Center Single Slot |
| b Double Slot | d Single Slot Drain- Hex |

The ACO Slot Drain single-slot system possesses some of its most significant characteristics, such as being discreet, elegant, and nearly invisible in the context in which it is installed.

ACO drainage products are manufactured from austenitic stainless steel; grades 1.4301 or 1.4404 according to EN 10088 (304 or 316L according to AISI) .
Load Class according to EN1253(Building Drainage) & EN1433(External Line Drainage)



Product Benefits :

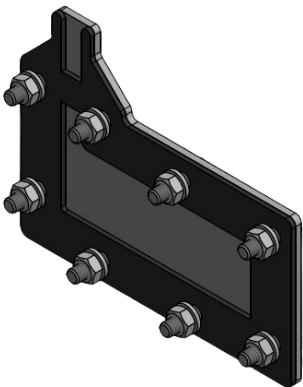
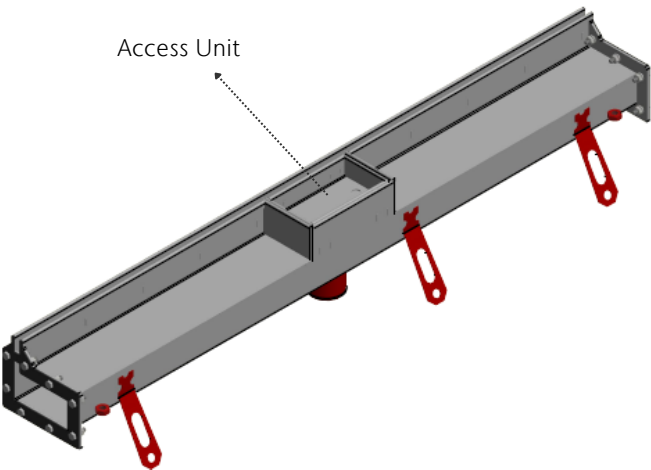
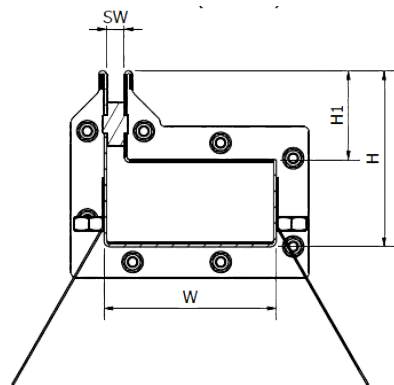
- System with heelsafe slot
- Suitable for both applications inside buildings and on the outside
- V-shaped bottom (Hex Type) for better water flow even at low flow rates and for better self-cleaning performance
- EasyFix adjustable leveling feet for simple laying installation
- EDPM gasket to guarantee a perfect seal
- Different grids covering the drain elements
- Modular system in elements from 50 cm to 1 m connectable through flanges equipped with gaskets and bolts for a perfect fit water tightness
- Fish anchors for better screed grip
- Available with or without internal slope
- Extended edge for optimal liquid waterproofing under the tile(optional)
- Material 1.4301 (AISI 304) & 1.4404 (AISI 316L) on request
- Available on load class A15-C250

*Article number shall be provided after final confirmation of the drawing

List

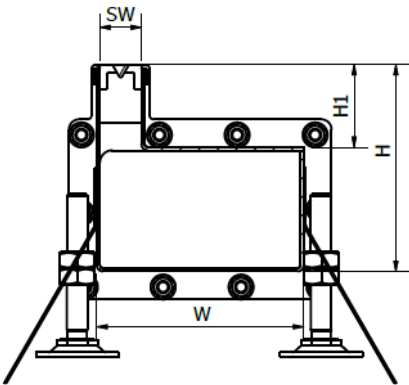
Side Single Slot

W (mm)	L (mm)	H (mm)	H1 (mm)	SW (Slot Opening) (mm)
100	500	80	30	8
100	1000	80	30	8
200	500	80	30	8
200	1000	80	30	8
300	500	120	30	8
300	500	120	30	8



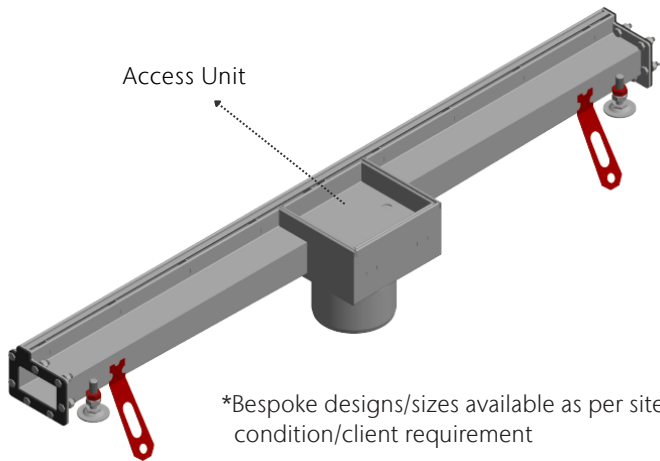
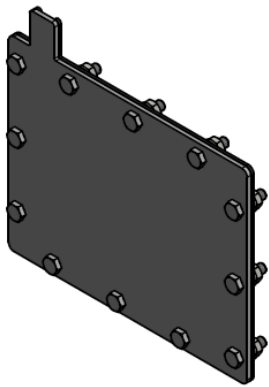
*Bespoke designs/sizes available as per site condition/client requirement

Double Slot



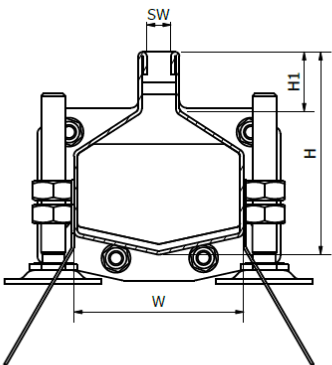
W (mm)	L (mm)	H (mm)	H1 (mm)	SW (Slot Opening) (mm)
100	500	80	30	8
100	1000	80	30	8
200	500	80	30	8
200	1000	80	30	8
300	500	120	30	8
300	500	120	30	8

N-cap



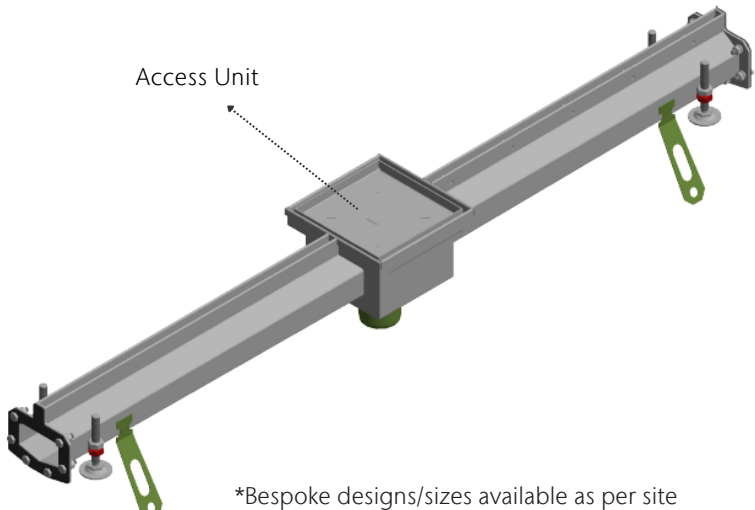
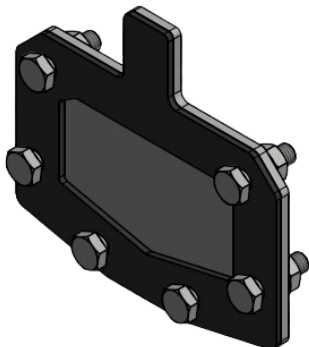
*Bespoke designs/sizes available as per site condition/client requirement

Single Slot - HEX



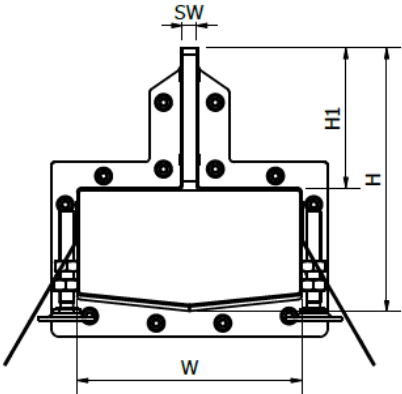
W (mm)	L (mm)	H (mm)	H1 (mm)	SW (Slot Opening) (mm)
80	500	80	30	8
80	1000	80	30	8

N-cap

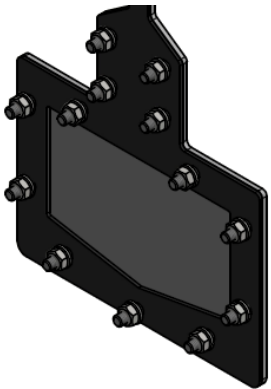
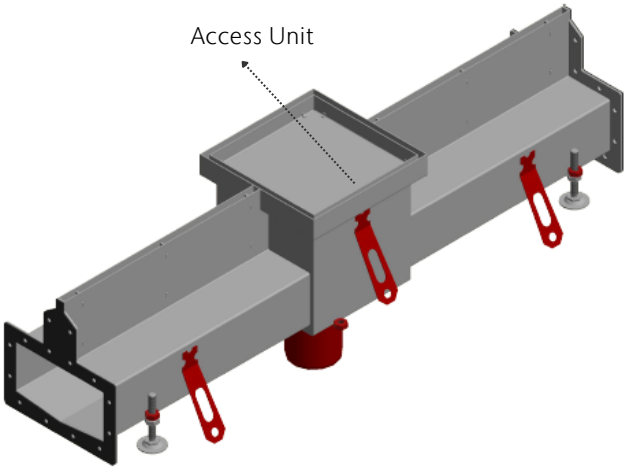


*Bespoke designs/sizes available as per site condition/client requirement

Center Single Slot



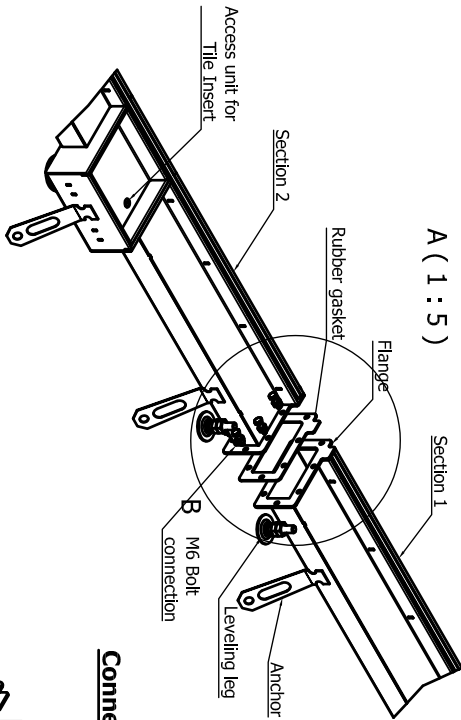
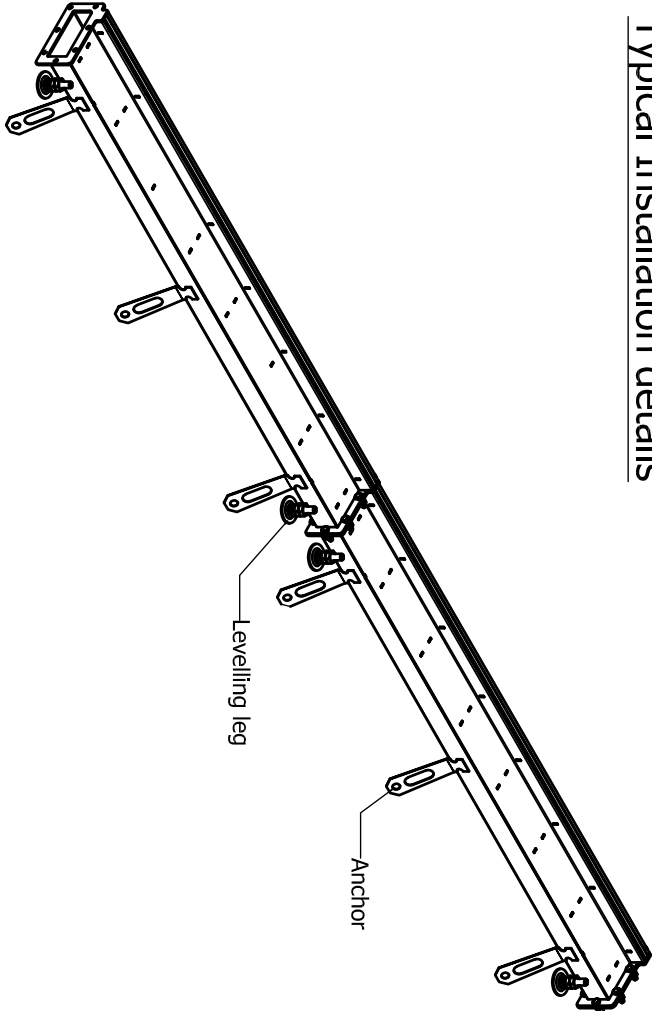
W (mm)	L (mm)	H (mm)	H1 (mm)	SW (Slot Opening) (mm)
100	500	80	30	8
100	1000	80	30	8
200	500	80	30	8
200	1000	80	30	8
300	500	120	30	8
300	500	120	30	8



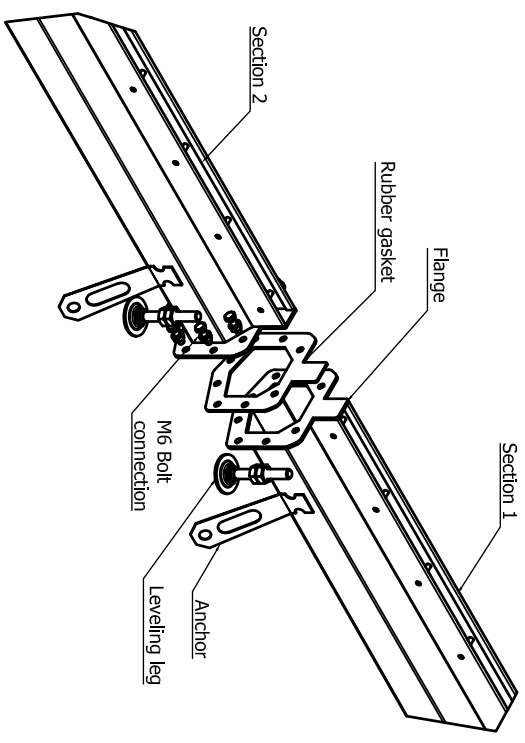
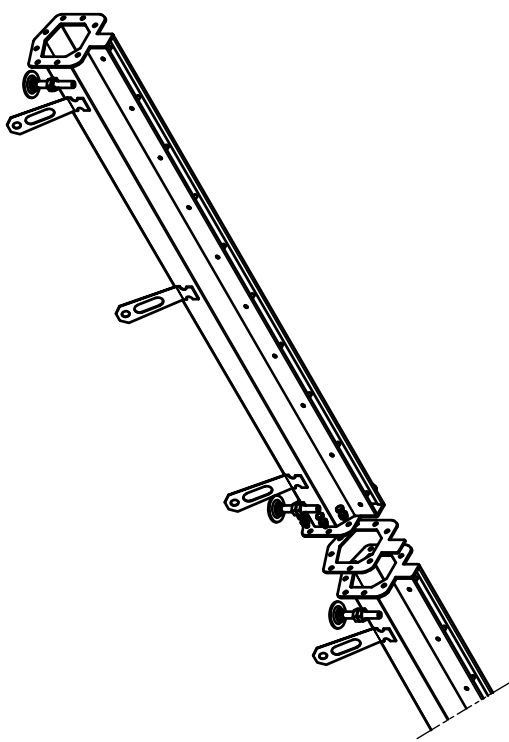
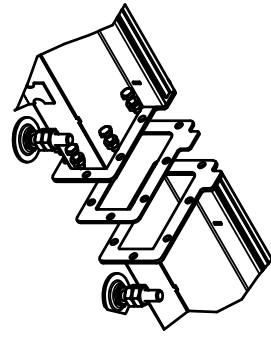
N-cap

*Bespoke designs/sizes available as per site condition/client requirement

Typical Installation details



Connection Details



Surface treatment: Pickling & Passivation

Designed by	Creation Date	Revised by	Revision Date	Material	Article Number	X.....
Yratham	17/02/2022					
Description						
Typical installation details for ACO slot channel						
Drawing no.	DX07-0XXXX	Notes	N/A	Revision	1	1/1

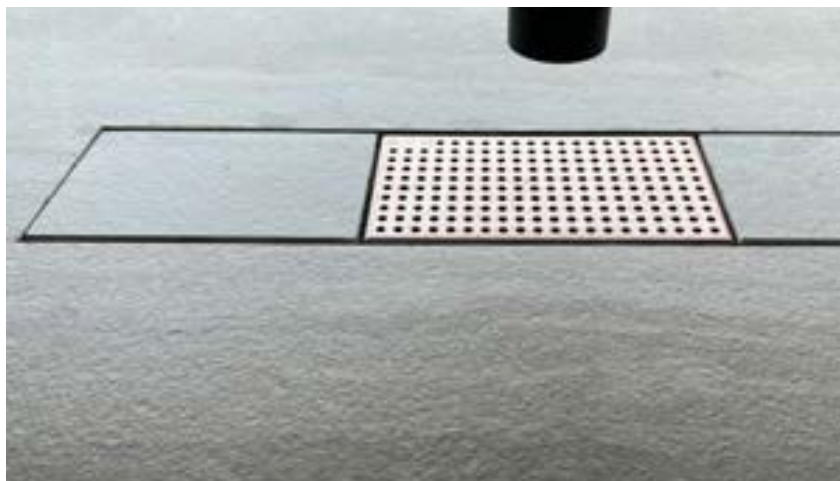


ACO is a registered trademark of ACO Systems AG. All rights reserved. ACO Systems AG is not responsible for the use of the ACO logo on other products.



Luxury Villa at Palm Jumeirah in Dubai

- Balcony double-slot drainage in stainless steel
- Terrace double-slot drainage system in stainless steel
- Access Cover in stainless steel



Luxury Villa at Palm Jumeirah in Dubai

- Bathroom floor drain and shower channels in stainless steel
- Pool shower channel in stainless steel

Every product from ACO supports
the ACO System chain



Fully Automatic Grease Separators
Oil Separators
Linear Channel Drains
Multi-Storey Car Park Linear Channel Drains
Access Covers
Shower Channels
Bathroom floor drains
Ablution Drains
Roof, Terrace and Balcony drains
Geocellular Stormwater Cells
Landscape Slot Drains
Lifting Stations

ACO Systems FZE

P.O. Box 18672, Dubai
Street 100, Building 07, Jebel Ali Free Zone
Dubai, United Arab Emirates
Tel. +971 4 880 69 98
Fax +971 4 880 69 97

info@aco.ae
www.aco.ae

